



VINEYARDS

Protect your property from fruit fly

It's vital to protect homesteads, vacant lots, rentals and storage sites.

Harvest all host fruit

- Pick as clean as possible, leaving no bunches on the vine.
- Harvest uncontracted grapes to the ground and crush them by driving over them or slashing to aid drying out. Do this as early in the season as possible.
- Drop fruit to the ground in daylight so sunlight and heat can begin the desiccation process.
- Harvest movement accreditation so growers, carriers and winemakers are aware of their obligations.
- Pick fruit on all trees and vines that are ornamental, domestic, legacy or used for windbreaks, shade or boundaries.

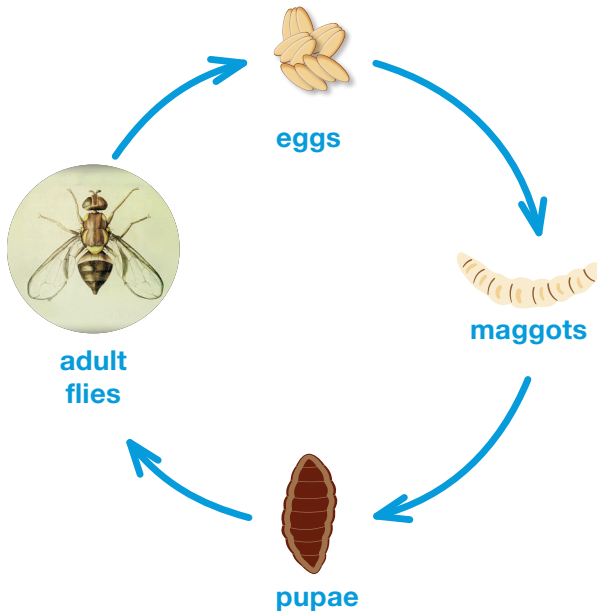
Keep your property clean

- Remove any unwanted or unused fruit trees or vines, including those which are sick or damaged, poor yielding or the wrong varieties. Include those near pickers' quarters, offices, sheds and other buildings.
- Remove all invasive pest plants that are fruit fly hosts such as prickly pear and olive.
- Regularly slash to keep grasses and weeds down, because fruit fly can live there.
- Encourage your neighbours to maintain good hygiene on their property as well.

Prune to protect

- Prune grapevines to avoid bunch congestion. Dense crops can harbour fruit fly.
- Drop all unharvested bunches to the ground at pruning.
- Careful pruning also allows good air flow, viticultural spray penetration, and effective pest and disease control.
- Record all fruit fly treatments in winery spray application records.

Queensland fruit fly life cycle



-
- | | |
|--------------------|---|
| Eggs | <ul style="list-style-type: none">• Females sting fruit to lay eggs. Picking excess fruit from trees helps break this stage of the cycle. |
| Maggots | <ul style="list-style-type: none">• Eggs develop into maggots (larvae) and start feeding on the fruit, which rots and falls to the ground. |
| Pupae | <ul style="list-style-type: none">• Once fruit is on the ground, maggots can easily bury into the soil where they form a pupal case. That's why it's essential to collect fruit from the ground, mulch (shred) it and thinly spread it out, or chemically treat it. |
| Adult flies | <ul style="list-style-type: none">• Males and females emerge from their pupal case, ready to mate. They live in various trees, which is why we use traps and bait in both fruit and non-fruit trees. |
| Mating | <ul style="list-style-type: none">• A female only needs to mate once and can lay hundreds of eggs. Sterile insect technique (SIT) flies now play their role in outbreak areas where wild fly populations are lower. |
-

We're here to help

For support or to arrange collection of large volumes of fruit waste, please call the Industry Hotline on 1800 255 556.