

Travelling within South Australia

Riverland Pest Free Area

Certain fruit and vegetables cannot be brought into the Riverland Pest Free Area.

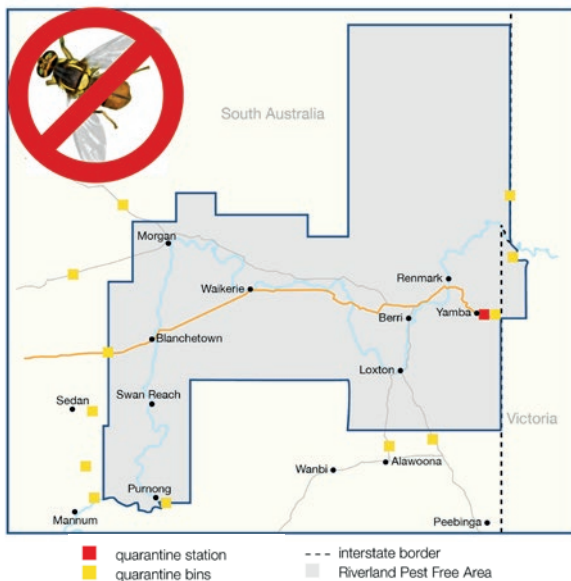
If you are caught with fruit and vegetables that are a fruit fly risk, your produce will be seized and you may be fined. Find out what is at risk, visit fruitfly.sa.gov.au or call 1300 666 010.

Pack thoughtfully and buy local when you arrive.

Quarantine bins approaching the Riverland



Purnong Road near Mannum
Goyder Highway near Morgan
Thiele Highway near Eudunda
Sturt Highway near Blanchetown
Stott Highway near Sedan
Angas Valley Road near Walker Flat
Hunter Road near Bow Hill
Browns Well Highway near Paruna
Karoonda Highway near Alawoona
Bede Road, near Yamba
Lindsay Point
Old Wentworth Road at the State border



Kangaroo Island

Do not take the following items to Kangaroo Island:

- Bees, bee products or equipment
- Pine Material
- Rabbits
- Unwashed potatoes*

*Potatoes that have been washed or brushed free from soil and in new packaging are permitted.

Quarantine bins



Penneshaw Ferry Terminal
Kingscote Airport



Don't risk a fine

Individuals caught illegally carrying fruit, vegetable, food or plant material will be fined.

Fines range up to **\$20,000** for a truck driver and up to **\$100,000** for any company caught illegally carrying fruit, vegetables or plant material.

Fruit Fly Outbreak Restrictions

Fruit fly outbreak restrictions in South Australia may impact the movement of certain fruit and vegetables, depending where you travel.

Check the website to learn if outbreak restrictions apply.

Contact us

fruitfly.sa.gov.au

1300 666 010

PIRSA.PlantHealth@sa.gov.au



Quarantine in South Australia

Know the restrictions

finest apply



Government of South Australia
Department of Primary Industries and Regions

Travelling to South Australia

Some fruit and vegetables, plants and food cannot be brought into South Australia as they can pose a pest or disease risk.

Understand how to plan your travel to and within South Australia so pests and diseases don't travel with you.

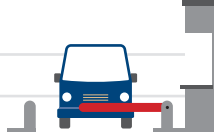
Quarantine stations

Ceduna – Eyre Highway

Oodla Wirra – Barrier Highway

Yamba – Sturt Highway between Mildura and Renmark

Mallee Highway between Murrayville and Pinnaroo.



Quarantine bins

Adelaide Airport

Mount Gambier Airport

Waikerie Airport

Adelaide Central Bus Station

Adelaide Parklands Terminal (Keswick Terminal)

Glenelg Highway near Mount Gambier

Nelson Highway near Mount Gambier

Princes Highway near Mount Gambier

Dukes Highway near Bordertown

Stuart Highway at Marla

Wimmera Highway near Naracoorte

Old Wentworth Road at the State border

Oodla Wirra (when quarantine station is closed)

Pinnaroo (when quarantine station is closed)

Lindsay Point



Visiting vineyards

Enjoy our wine regions but don't walk through vineyards as you may bring in a pest. You cannot bring grapes, grapevines and associated products into South Australia. Visit www.vinehealth.com.au



Can I bring these items from interstate?

FRUITS, VEGETABLES AND NUTS (PRODUCTS) from	NSW	NT	QLD	TAS	VIC	WA
Asparagus	✓	✓	✓	✓	✓	▲
Fruit (fresh)	✗	✗	✗	▲	✗	✗
Fruit & vegetables - processed (cooked, dried, preserved, frozen, canned, pureed)	✓	✓	✓	✓	✓	✓
Herbs (fresh + cut)	✓	✓	✓	✓	✓	▲
Herbs and spices (dried)	✓	✓	✓	✓	✓	✓
Melons (watermelon, rockmelon, honeydew)	▲	▲	▲	✓	✓	▲
Mushrooms	✓	✓	✓	✓	✓	✓
Nuts (dried)	✓	✓	✓	✓	✓	✓
Onions, garlic (cured, topped and tailed)	✓	✓	✓	✓	✓	✓
Onions, garlic, leeks, spring onions, chives (fresh)	✓	✓	✓	✓	✓	▲
Pineapple	✓	✓	✓	✓	✓	✓
Potatoes washed or brushed, soil free (ware, not for planting)	✓	✓	✓	✓	▲	▲
Spinach, silver beet, peas, beans	▲	▲	▲	✓	✓	▲
Vegetables - cucurbits (cucumber, pumpkin, squash, zucchini)	▲	▲	▲	✓	✓	▲
Vegetables - fruiting (capsicum, chilli, eggplant, tomato, tamarillo)	✗	✗	✗	✓	✗	✗
Vegetables - leafy (lettuce, cabbage, cauliflower, broccoli, kale, celery)	✓	✓	✓	✓	✓	✗
Vegetables - root - soil free with tops removed (carrot, turnip, parsnip, beetroot, sweet potato)	✓	✓	✓	✓	✓	✓
FOOD ITEMS						
Camping food (freeze dried, dehydrated), eggs	✓	✓	✓	✓	✓	✓
Dairy products (milk, cheese, yoghurt)	✓	✓	✓	✓	✓	✓
Fish (fresh, canned)	✓	✓	✓	✓	✓	✓
Fruit Salad (fresh & cut to < 2cm cubes)	✗	✗	✗	▲	✗	✗
Honey, honeycomb, beeswax, pollen, other bee products, bees, hives, used equipment	▲	▲	▲	▲	▲	▲
Meats (poultry, sausage, salami, sliced meats)	✓	✓	✓	✓	✓	✓
Processed foods (noodles bread, rice, cereals, baby food, biscuits, cakes)	✓	✓	✓	✓	✓	✓
OTHER						
Animals domestic (dogs, cats)	✓	✓	✓	✓	✓	✓
Cartons (fruit and vegetable, used for packing containers) not to KI	▲	▲	▲	▲	▲	▲
Eggs (poultry hatching)	✓	✓	✓	✓	✓	✓
Soil (dirt)	✗	✗	✗	✗	✗	✗
Weed-free stock feed (hay, fodder)	✓	✓	✗	✓	✓	✗
PLANT ITEMS						
Bulbs, corms (dormant)	▲	▲	▲	▲	▲	▲
Citrus plants (no fruit, no soil, commercial potting mix only)	▲	▲	✗	✓	✓	▲
Cut flowers (excluding Myrtaceae)	▲	▲	▲	▲	▲	▲
Date palms (must be free from soil and in commercial potting mix)	▲	✗	✗	▲	▲	✗
Fruit and vegetable plants including seedlings	▲	▲	▲	▲	▲	▲
Grapevines, cuttings, budwood	✗	✗	✗	✗	✗	✗
House/pot plants and cuttings / nursery stock / potted herbs	▲	▲	▲	▲	▲	▲
Pine timber (dried)	▲	▲	▲	▲	▲	▲
Seeds (edible or sprouting) not maize for planting	✓	✓	✓	✓	✓	✓
Wood (firewood: dried and bark-free)	✓	▲	✓	✓	✓	▲
Wood / wood chips	▲	▲	▲	✓	▲	▲

TO NOTE: ▲ You need more information about this item, call 1300 666 010.

Although broad terms such as 'fruit and vegetables' are used, exceptions may apply. Note that produce status can be affected by transiting through other states. This information is correct as of August 2021, but is subject to change. For up to date information please check www.pir.sa.gov.au